

## For users of Mac OS X, version 10.1.3 or later

Nikon Scan 3 (Ver.3.1.3): Downloadable manual in pdf format—For first time users

Installation Procedure 

Pp. 1-3

Starting Nikon Scan 3.1.3 

Pg. 4

Nikon Scan 3.1.3 Menus 

Pg. 5

**This manual is for those users who are running  
Nikon Scan (Ver.3.1.3) under Mac OS X, version  
10.1.3 or later.**

# Installation Procedure

## Installing Nikon Scan 3.1.3 under Mac OS X, version 10.1.3 or later

The scanner driver Nikon Scan 3.1.3 is designed for Mac OS X, version 10.1.3 or later.

This manual explains how to install and start up the downloaded version of Nikon Scan 3.1.3. Nikon Scan 3.1.3 can be downloaded from Nikon's web site.

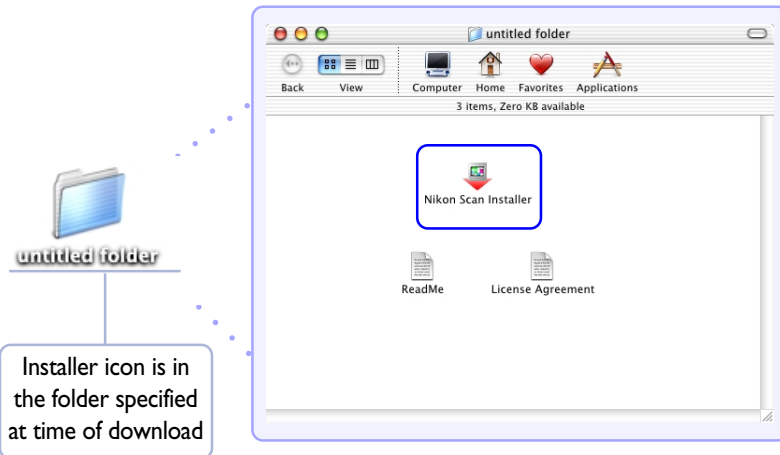
### Step 1

Turn the computer on and start up Mac OS X.

### Step 2

Double click **Nikon Scan Installer** to start the installer.

**Nikon Scan Installer** is in the destination folder you specified when you downloaded the program.



### Important Notices



#### Users of LS-2000 and COOLSCAN III

Nikon Scan 3.1.3 can not be used with the LS-2000 or COOLSCAN III.



#### Minimum memory requirements

When using Nikon Scan 3.1.3 under Mac OS X, a minimum of 256 MB of memory is required.

Start-up OS X: 128 MB

Start-up Nikon Scan 3.1.3 : 128 MB



#### Adobe Photoshop plug-in

The Adobe Photoshop plug-in can not be used with Nikon Scan 3.1.3.



#### Memory allocation

Under Mac OS X, there is no need for you to adjust memory allocation for individual applications.

[Click here to go to the next step](#)



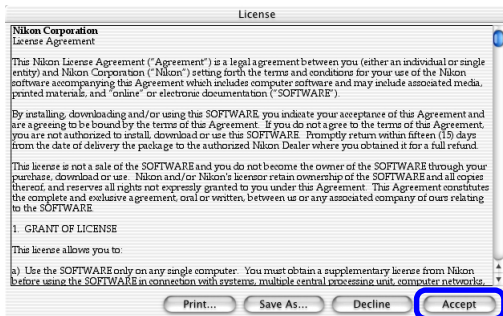
## Step 3

The Installer starts.  
Click **Continue**.



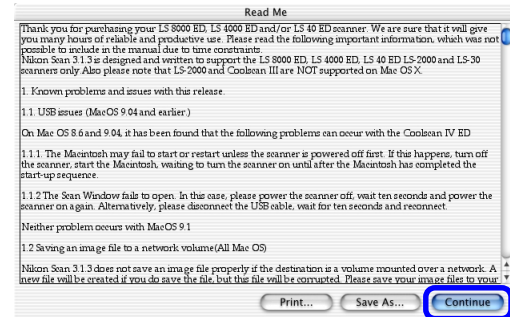
## Step 4

The software license agreement is displayed.  
Read the agreement carefully. If you accept the agreement and wish to continue with the installation, click **Accept**.



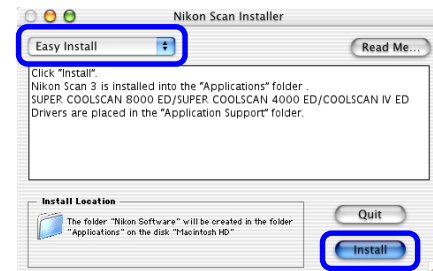
## Step 5

The Read Me file is displayed. The Read Me file may contain important information that could not be included in this manual. Read the contents carefully, then click **Continue**.



## Step 6

The Nikon Scan Installer dialog box appears. Select **Easy Install** from the pulldown menu in the dialog's top left corner.  
Click **Install** to start the installation.



## Step 7

When the installation starts, the progress meter is displayed.

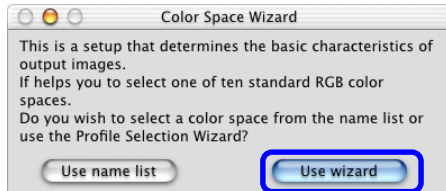


Click here to go to  
the next step



## Step 8

During the installation, the Color Space Wizard appears. Click **Use wizard**.



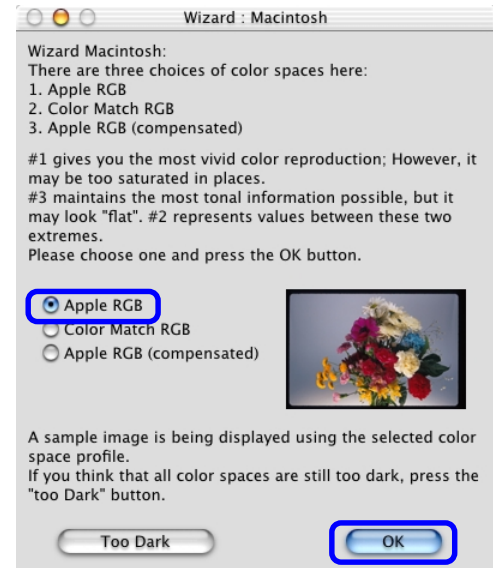
## Step 9

The dialog box shown below appears. Click **Macintosh**.



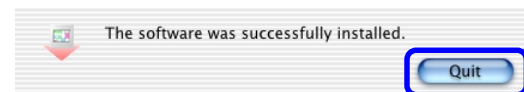
## Step 10


The **Wizard : Macintosh** dialog box, which allows you to choose a color space, appears. Select **Apple RGB** from the list of color spaces (recommended setting). Click **OK**.



## Step 11

When the installation of Nikon Scan 3.1.3 is complete, the dialog box shown below appears. Click **Quit**.

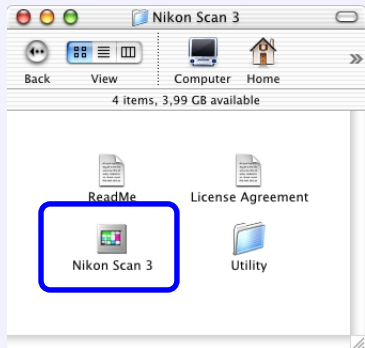


Click here to go to the next step 

# Starting Nikon Scan 3.1.3

Follow the instructions to open the folders and start Nikon Scan 3.1.3.

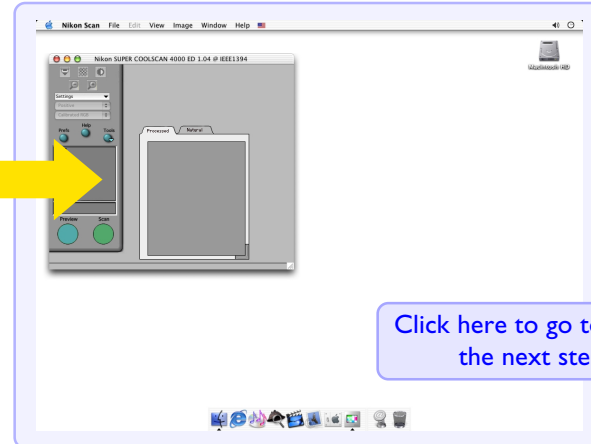
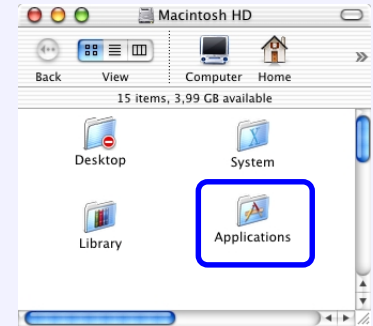
**Step 5** Double click the **Nikon Scan 3** icon to start Nikon Scan.




**Step 1** Double click the **Macintosh HD** icon on the hard disk.



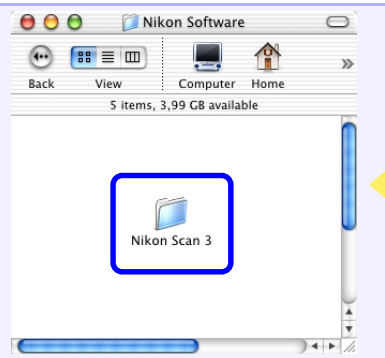
**Step 2** Double click **Applications** to open the applications folder.



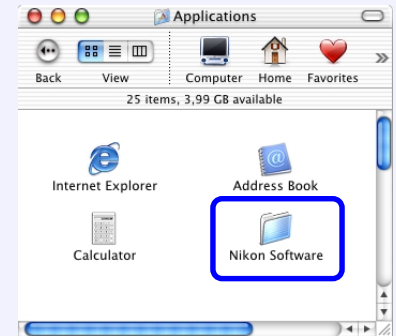
Click here to go to the next step 

Start up Nikon Scan 3.1.3

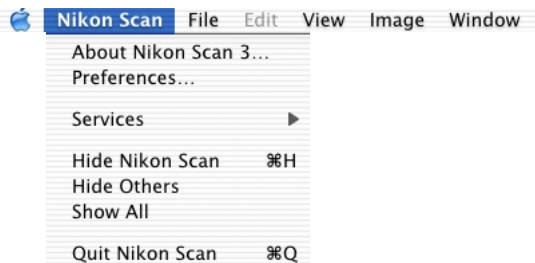
**Step 4** Double click the **Nikon Scan 3** folder.



**Step 3** Inside the applications folder, double click **Nikon Software**.




# Nikon Scan 3.1.3 Menus

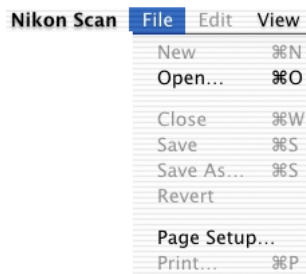


## About Nikon Scan3

Displays the version of Nikon Scan 3 you are using.

## Changes to menus

The name and positions of some menus and menu items differ from earlier versions of the Nikon Scan. Differences are shown by the  icon.



## New

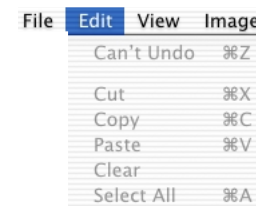
This command can not be used.

## Close

Closes the active image window.

## Save

Saves the file in the active image window using the current file name.



## Edit menu commands

The Undo (⌘ Z), Cut (⌘ X), Copy (⌘ C), Paste (⌘ V), Clear (Delete) and Select All (⌘ A) commands in the Edit menu can only be used when entering data into text boxes.



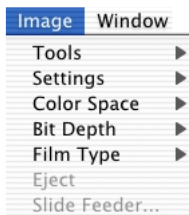
Note

The **Quit** option has been moved to the Nikon Scan menu where it is now **Quit Nikon Scan**.



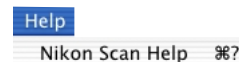
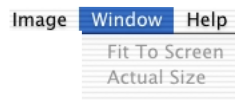
Note

The **Preferences** option has been moved to the Nikon Scan menu.



Note

The items in the Image menu, above, were previously in the Nikon Scan menu.



Return to top page

